

Age In Lost River Valleys Emphasizes Early Report

studies in and immediately to the region covered report.

ard was responsible for the task of collecting, as- d checking all well data, using part of the report these three men. The is no longer in exist- e fell fortunate in hav- ort made available to per for a brief period. follow: " . . . It is not to find the water table 200 feet below the sur- streams debouch upon This condition is well by Birch Creek and by t and Little Lost Rivers. s above the mouths of ms the water table is to the surface, and ie of them numerous gs occur. There is no the topographic char- valley floor where they investigation reveals the ogic structure to which e.

r table lies close to the g the axes of the val- in Big Lost River Val- few sinks occur."

" . . . On account of the consid- erable flow received by the Little Lost River from spring-fed creeks, losses. During the 3 years 1921-23, there was an average annual dis- charge of 47,000 acre-feet past the mouth of the Big Lost River and other streams to the west. The Howe gaging station is about 5 miles down stream from the Knoll- lin ranch, where the ground-water flow of the Little Lost River Val- ley is forced to the surface, appear- ing in the form of spring inflow to the stream. Measurements indicate only a small loss in the stream channel below the Knollin ranch and the gaging station. . . .

"The chief water-bearing forma- tion in the Little Lost River valley is the alluvium that underlies the valley floor. . . .

"The Big Lost River rises in the high mountainous region included in the Lemhi National Forest, Cus- ter county, Idaho. . . .

"The productive run-off of the Big Lost River comes principally from a relatively small area on its headwaters . . . During the period 1921-29 the average annual dis- charge at this station (Howell gag- ing station) was 191,700 acre feet. . . . Below the Mackay Dam the riv-

er dwindles downstream through ir- rigation diversions and seepage losses. During the 3 years 1921-23, there was an average annual dis- charge of 47,000 acre-feet past the lowest canal diversion below Arco, but with this exception, there was no appreciable outflow from the valley during the 11 years 1919-29, although at Arco the river has a drainage area of 1,560 square miles. . . .

"The contributions from the Big Lost River to the ground water flow of the Snake River Plains have been estimated by computing the total supply available from stream flow and deducting from it the quantity of water consumed on the irrigated land below the dam. About 40,000 acres of land below from the Big Lost River and tribu- taries below the points where they are measured during the years con- sidered. The consumption of water by transportation and evaporation of 1.7 acre-feet to the acre for the season, exclusive of precipitation, was assumed for the crops on these lands where water was available throughout the season. . . .

"Between the narrows below the Mackay Dam and the village of and the consumption of water on

Leslie, a distance of 10 miles, the ground water under the valley floor holds up to a level equal to or higher than the river level. . . .

"Downstream from Leslie the valley again widens, and the ground water level drops rapidly below the river level, and in the Darlington Sinks the river sustains losses rang- ing from 30 to 75 second feet. About 2 1/2 miles east and 1 mile south from Darlington water again rises and flows into the river channel, but all of it is diverted during low- water periods at the Moore river- sion dam . . . The rise here is al- ed by the constriction of the valley caused by Antelope Ridge, near Moore. . . .

"The average annual flow of the Big Lost River at the gaging sta- tion below the Mackay Dam in 1921-29 was about 208,000 acre feet, to which may be added 64,000 acre feet as the average annual inflow to the valley from Lower Cedar, Alder, Pass and Antelope Creeks and minor tributaries between the Mackay Dam and the Moore Dam, making a total average annual sup- ply of about 272,000 acre feet. . . .

"If there was no seepage loss

the 17,000 acres of irrigated lands in this area is taken as 30,000 acre feet annually, the average annual flow of the river at the Moore Dam should be about 242,000 acre feet. However, during this period the average annual flow at the Moore Dam was only about 96,000 acre feet, in addition to which there was an annual average of about 37,000 acre feet carried by the Blaine Canal past the Moore Dam. Hence it is inferred that approximately 109,000 acre feet annually moved underground past the Moore dam. . . .

"Between the Moore Dam and a point a mile above Arco, a distance of nine miles, the river flows across the Moore Sinks. In years of plen- tiful water supply, when the river runs through this section for sev- eral months and large volumes of water are used in the irrigation of adjacent lands, as much as 75 second feet of return flow rises in the river channel and in several spring-fed creeks a mile or two above Arco. . . .

"On dry years, however, this re- turn flow decreases to practically nothing. When the groundwater levels are low in this section, more than 200 second feet must be dis-

charged past the Moore Dam in or- der for any water to reach Arco. . . .

"At a point about 5 miles south of Moore the Big Lost River turns to the east and thence continues southeastward near the edge of the basalt flow for several miles. The main ground water flow, however, continues southward beneath the lavas, its course being fairly well defined by the ground-water con- tours at the mouth of the valley. The area of shallow ground water in the vicinity of Arco appears to be supplied chiefly from the east- ern side of the valley and the sup- ply for this area is apparently not large."

Editorial note: Following this de- tailed report, several additional pages are devoted to continued study of the general direction of the underground flow east from Arco. A detailed description of a well-drilling test made on May 7, 1930, at Arco gives a comprehen- sive report of the general flow, and it appears well founded that the underground is of such nature and depth that there is little likelihood of a ground water depletion, except that as more wells are drilled, low- ering the depth is certain.

Butte Soil and Water District sponsoring meeting

The Butte Soil Conservation District is sponsoring a meeting in Arco at the Soil Conservation Service Conference Room in the Fredricks Building on December 10, 1987 at 1:30 p.m. We are inviting a few community leaders (farmers, ranchers, Lost River Irrigation Co., city officials, sportsmen and civic clubs, etc.) to determine the interest of forming a special district that will be able to deal with the flooding problems on the Big Lost River Drainage.

We have an organization in mind

similar to the one that was formed in the Little Lost River Valley to solve their flooding. It is true, we seem to be in a dry cycle right now, but if true to past history, we will be fighting floods in the next few years again.

Now seems to be the time, please come and assist us with your thoughts. We would like to have representation from county government, irrigators, clubs, farming organizations, etc. If you know of someone who would be interested please pass this invitation on to them.

Page 8-B, The Arco Advertiser, Thursday, December 17, 1987

Meeting investigates forming watershed improvement district

A meeting of community leaders sponsored by the Butte Soil and Water Conservation District on December 10 to investigate the possibility of forming a watershed improvement district was well attended.

Attending this meeting were Harold Bell, Butte County Commissioner, Ivan Taylor, Custer County Commissioner, J. Doyle Jensen and Doug Rosenkrance, Big Lost River Irrigation District, Martin Prather, USDA Forest Service, Scott Engle, Soil Conservation Service, LaMon Baird, RC&D Coordinator, Doug Storer, Butte County Roads, Jack Jensen, Randy

Purser, Reed Asay, Ron Chisham, supervisors on the BSCD Board, Marvin Goddard, Dave Nelson, Victor A. Johnson and Billy McMurtrey. This group directed the soil conservation district to gather information already compiled and put together a report to present back to the group in approximately 30 days.

A request was made of Butte and Custer County commissioners to commit monies to help pay for this effort. If these funds are available the Board will hire someone to compile this information.

Copy — out Leslie bridge

Flood waters resulting from the heavy snowmelt runoff into the Big Lost River watershed have accounted for road and bridge damage on some area roads, with considerable flooding of low lying lands in the valley.

The heavy inflow of water into Mackay Reservoir has resulted in a heavy volume of water going over the spillway and raising the level of the Big Lost River below the dam to more than the capacity of the channel.

Above the Mackay Reservoir high water has also invaded lands along the river and most creeks in the area are running bankful or above flood stage.

Most serious damage in the area occurred Monday night, when the highway bridge over the Big Lost River on U.S. Highway 93 washed out. Water going around an abutment pier at the south end of the bridge undercut the highway and resulted in the road caving in. Traffic over the highway was cut off and light traffic was routed along the "Hill Road" at the foot of the Lost River Range, while local traffic was able to continue by using county roads.

State Highway Department authorities closed the road from Arco to Mackay and all truck and other

heavy traffic was rerouted over State Highways 22-28 to Salmon.

Although the flow of water was somewhat reduced by Tuesday night in the Big Lost, the bridge over the river settled, making emergency repairs impossible. Loss of traffic over U.S. 93 represents a severe economic blow to the communities of Arco, Mackay and Challis, with the prospect of a long delay in replacing the crucial bridge a subject taken up at a special meeting in Mackay Wednesday forenoon.

It was reported that the heavy snowmelt in the Copper Basin Big Lost River watershed was hastened by warm rains in the area during the weekend.

Butte County Director of Emergency Services (Civil Defense) Bill Babcock said Tuesday night that Mike Sweeney of the Idaho Bureau of Disaster Services had been informed of the situation and was scheduled to tour the area with Babcock Wednesday in order to become acquainted with the situation in case disaster aid is necessary to alleviate a worsening situation.

Several other bridges in Custer County were reported in jeopardy,

Continued on Page 2-B

THE HIGHWAY 93 BRIDGE ACROSS THE BIG LOST RIVER had settled several feet into the river by Tuesday afternoon. Following the closing of the highway Monday night, State Highway Department personnel standing guard at the bridge reported that the bridge started to settle into the river late Monday evening. Destruction of the bridge caused closure of the only highway link between Arco, Mackay and Challis, forcing traffic to be rerouted over Highways 22 and 28 through the Birch Creek and Lemhi Valleys into Salmon.

2 Sections, 12 Pages

Advertiser

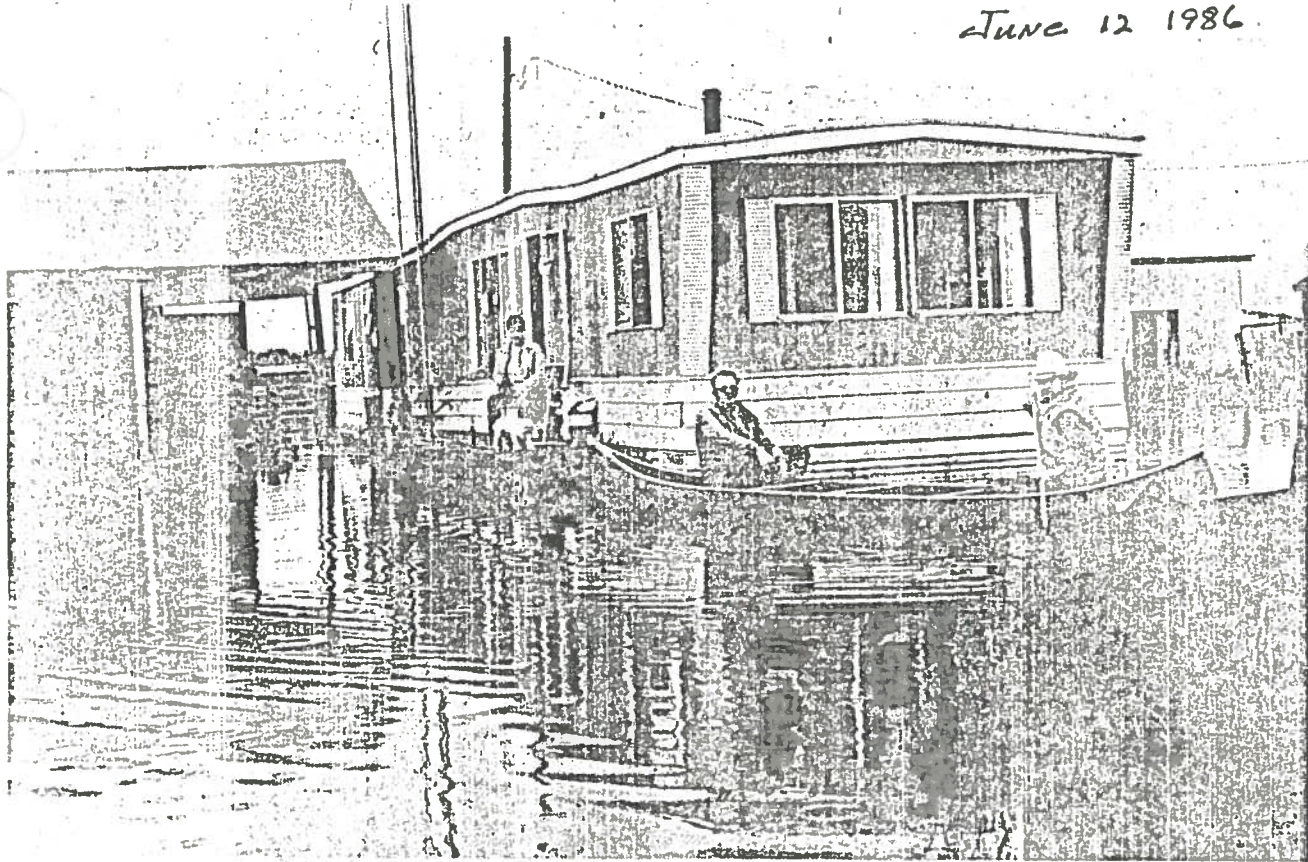
June 12 1986

Camp

WASHINGTON
visiting American
Forests this year
save 15 percent
thanks to a
Stamps, P. M.
U.S. Department
Forest Service
Camp Stamp
1 at selected
Forest Service
chasers to a d
fees. For ins
\$10.00 worth
available for \$
must be purch
accepted at
forest camp

Peterson's
program was
forests in Colo
The results we
the Forest Se
the program t
year.

"Camp Stamp
national fore
economical
Peterson's
significantly
and accounti
Service for
checks collec
These savin
maintain and
forests. As



LEON COON AND BERT SECRIST paddle a canoe around the Coon mobile home adjacent to Highway 93 in southwest Arco, while Mrs. Coon waits on the porch. This

is the first time in many years that water has encroached this far into Arco.

and donated prizes for the tournament.

Prizes included—Jeanine Youngstrom, pitchers of beer

Donald's Bargain Barn-Old Faithful Beverage-Coca Cola (Idaho Falls), packs of soft drinks

Thanks for the fine job to Bill Haralson for helping organize the tournament; Phillip Ivie and Duane Parks for being outstanding umpires; Susan Haralson for keeping all the facts straight at scorekeeping; Steve and Marsha Chandler for doing a great job on the grounds; Jay Andersen for picking up last minute supplies and Arlo Lott for getting a team together on such short notice so we could get eight teams together to have the tournament.

If you missed out on the exciting tournament this year, get your teams and plans started for next year.

County applying for bridge grant

The Butte County Commissioners are making application for a Community Development Block Grant in the amount of \$95,000 for replacement of the bridge across the Big Lost River on Phillips Lane north of Arco.

The bridge was severely damaged and rendered unusable during the flooding of the river this spring, necessitating closure of the road.

Due to the importance of the road for school and harvest transportation, immediate action is desired.

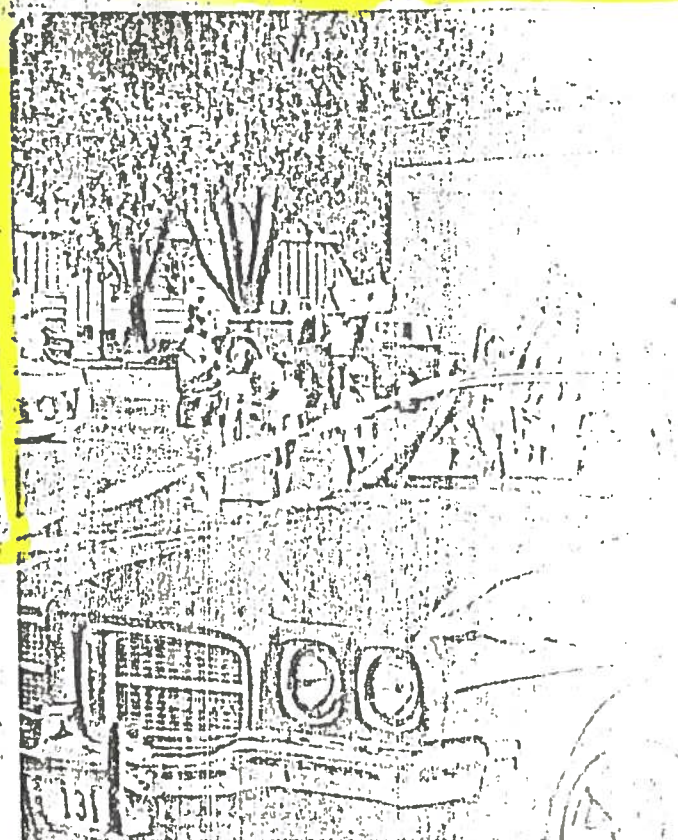
The grant application is being handled by Rex Eads of the East Central Idaho Planning and Development Assn.

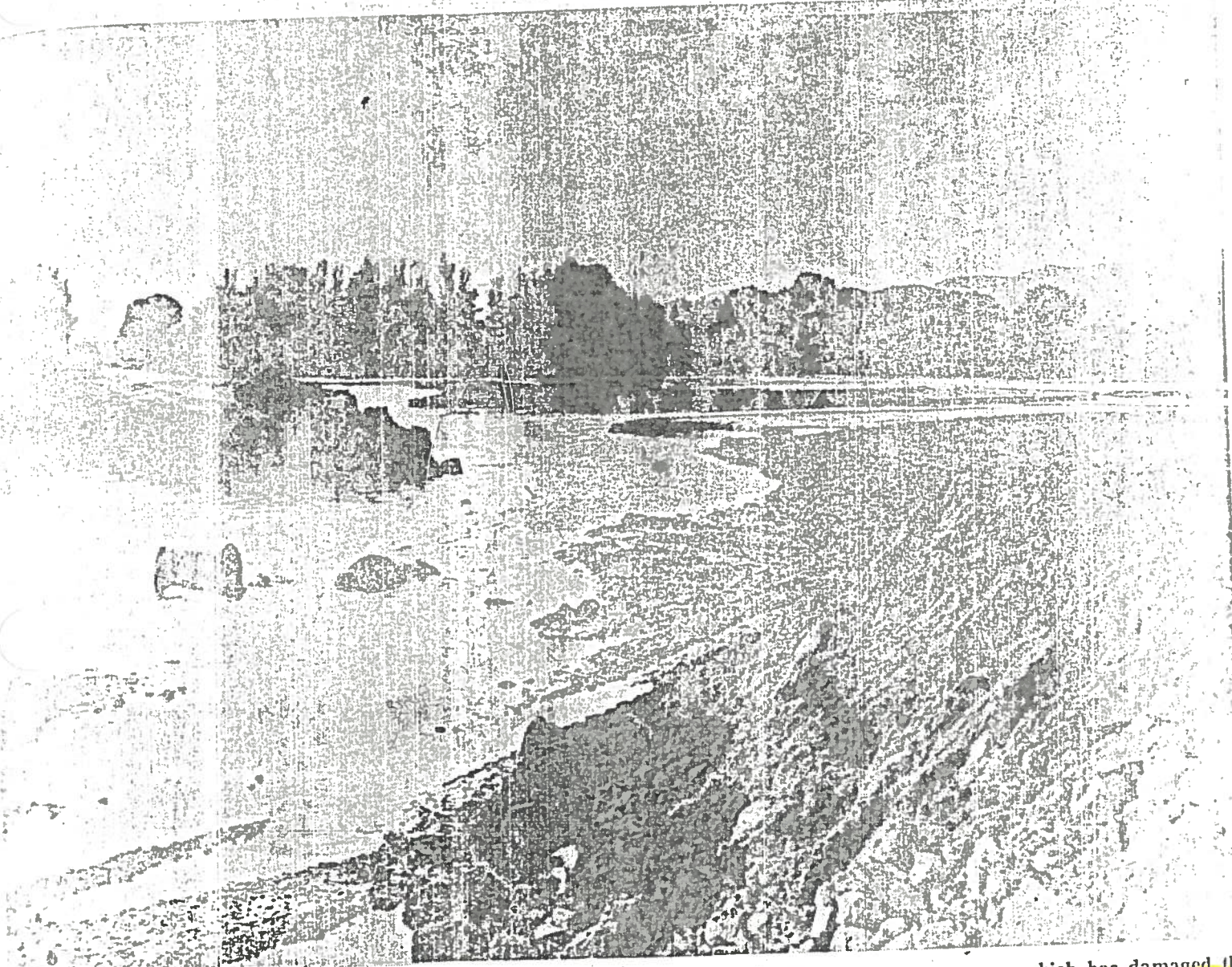
Special Meeting Today

11:00 a.m. at Golden West

All business persons interested in helping to make arrangements to help accommodate approximately 200 people in Arco for two to three weeks in September are urged to attend a special meeting in the meeting room of the Golden West Cafe at 11:00 a.m. today (Thursday).

This is in connection with a movie company scheduled to shoot scenes at the Craters of the Moon, and is a very important meeting for the economy of Arco.





A RUINED MEADOW can be added to the toll of Big Lost River flood damage this week. This meadow on Rothwell Hereford Ranch, operated by Lew and Ollie Rothwell west of Arco has been literally cut to pieces, and much of the topsoil washed away following a washout of Sunset Drive two weeks ago. Butte County road crews are filling in the washout this week. County commissioners chairman Bud Gamett said the county possibly will put in a larger bridge on up the

roadway, hoping to relieve pressure which has damaged the road and Rothwells' fields in two of the past three years. A survey last week by state officials set damage to county roads and bridges and to Big Lost River Irrigation Dist. at \$150,000. Total damage from floods to public and private lands and structures is expected to go over a half million dollars.

Wheat growers face shortage storage bins

The administrator of the Idaho Wheat Commission urged wheat growers to find a place now to store this year's predicted record crop, which experts figure will be a record.

Stake MIA girls leave for camp

Lost River Stake girls of MIA ages left Tuesday for Camp Loristica to spend four days camping out and taking part in hikes, camp cookery and various other phases of summer camping.

Senate committee sets hearings on spud label bill

The Senate Commerce Committee will hold hearings on Idaho's state-of-origin potato labeling bill on Aug. 8, Senators Frank Church and Len Jordan said this week.

Primary eye clinic is next Wednesday

Parents of children who will enter first grade this fall will be reminded of an eye clinic to be conducted by Dr. William F. Karg at his office beginning at 1 p.m. next Wednesday.

The tests were arranged by the Arco Parent-Teacher Association. Fee is \$1 per child.

group old hearings

Sen. Beal, (R) Dist. 1, of the Interim Committee of the Idaho Legislature reported this week to those who believe they are in difficult or adverse situations may be heard before the committee has decided at the time that the committee will hear from taxpayers who are having difficulty with problems of taxation, and will have meetings at which problems may be discussed.

Legislators are urged to let Senator Beal of the House of Representatives, Boise, know of their problems.

Library hour July 14

Library at Lost River will begin on 10:30 to 11:15 a.m. on Tuesdays 4 through 12. The library will not be open to the public during the summer, but will open at the end of the month, 11:30 a.m.

Evlyn Smith said 100 children, grades 1 through 4, are participating in the "Join the Club" program. "Join the Club" is a program of 11 books, and still more to go.

PAGES HOME

Fire Chief called at 1:30 p.m. to the Charles Hill Addition to fire caused by spontaneous combustion. Fire Chief reported damage to the house.

Glass of '57 gathers in Arco

Class of '57 from Butte County gathered Saturday morning at Arco to attend the get-together.

Leslie will host court of honor

The Leslie Ward Troop, Boy Scouts of America, will host a Lost River District Court of Honor in Leslie Ward Church Friday at 8 p.m. Cal Roberts, district commissioner will be master of ceremonies.

FHA emergency loans are extended for year

The Farmers Home Administration extended the emergency loan period for one year in seven Idaho counties, including Butte, Sen. Frank Church said yesterday.

The FHA told Church this action was taken because farmers generally have not recovered sufficiently from substantial crop losses last year, and that needed credit from local sources would be hard to obtain.

The extension is effective in Butte, Bingham, Bonneville, Jefferson, Clark, Fremont and Teton counties.

Sen. Church urged farmers to get in touch with local FHA offices for details.

The Weather

June 28	77	48
June 29	84	47
June 30	87	54
July 1	87	51
July 2	90	48
July 3	89	54
July 4	82	57

There was .31 inch of moisture during the week.

GIVES FLAG

Elmer Lambert has presented a large United States flag to Gover Williams Post, American Legion. The flag was used in the military funeral of his brother, Roy Lambert, at Custer National Battlefield Cemetery in Montana.

Half million dollar damage estimate in continuing flood

Estimates of damage to crops, roads and bridges from flooding of Big Lost River climbed to a half million dollars this week, as Watermaster DeVon Jensen offered some hope for relief from the relentless pressure of the snow pack melting in mountains of the drainage.

Jensen said runoff at Howell Gauging Station above Mackay Reservoir was 2284 second feet this morning. Gauges read 3880 on June 2, and a high of 4492 in May.

Jensen estimated damage to crops at \$350,000, and to roads and bridges at \$150,000. Most of the crop damage is in the

Valley horses win at Rupert

Lost River Valley horses won two races and placed second in another at Rupert on July 4.

Dee Maynard's "Serial Star" won the feature race against the top horses in Idaho and Eastern Oregon.

Harold and Rita Andersen's "Rapid John" won one race, and their "Jilt" won a second place.

Maynard's horse was trained by the late W. H. "Pappy" Young.

4-H horsemen slate clinic

Butte County 4-H Horse Club leaders and members are invited to attend a horse clinic scheduled at Challis on Tuesday, beginning at 10 a.m. at the rodeo grounds near the Challis Airport.

Morris Hemstrom, extension animal husbandman of the University of Idaho, Moscow, will assist with this clinic.

Lost River area between Arco and Moore.

Contamination of domestic wells and flooding of septic tanks has forced some families to move, but there has been no damage to homes.

Jensen said 7,000 acres of cropland and pasture, about equally divided, are under water, with sub-surface water causing most damage.

County commissioner chairman Bud Gamett of Moore said one county bridge has been completely destroyed, and five others will have to be replaced or repaired. Many east-west county roads are closed.

The old highway between Moore and Arco was cut Monday, when a culvert on Sunset Drive about a half mile west of the Arco city limits washed out. Highway 93A remained dry and passable. Special highway department crews from Shoshone have kept levees and ditchbanks in good condition, preventing flooding of the highway near Leslie, a trouble spot during the 1965 flood.

Spring Creek east of Moore ran high early in the week, cutting county roads.

The U. S. Army Corps of Engineers has been in the valley for two weeks, strengthening river channel banks and bridges and holding structural damage far below that of the 1965 flood.

Wednesday the Corps had repaired a break in an irrigation canal near Darlington, which had forced the Albert McAfee family from their home. Irrigation district workers have coordinated their efforts with the Corps of Engineers.

Wool pool sells for 43.79 cents

Butte County Wool producers loaded 54,127 pounds of wool

ARCO ADVEI

Arco, Idaho, Thursday, July 29, 1965

Big Lost damage estimates go over million dollar mark

Total damages from flooding of the Big Lost River were set at \$1,060,000 Monday by Ray Willman, a representative of the federal Office of Emergency Planning in Everett, Wash.

Willman spent Friday and Saturday in the valley, viewing flood damages and talking with local officials.

Butte County commissioners chairman James C. Anderson said he understands Gov. Robert E. Smylie will return to Boise Friday evening, and will again request that Idaho be declared a disaster area, to enable the Lost River Valley to qualify for federal disaster relief.

Governor Smylie has been in Minneapolis, Minn., for the National Governor's Conference. Today he is in Washington, D. C., where he will be briefed on the situation in Viet Nam.

W. E. Ramshaw, Butte chairman of Civil Defense, said that under federal procedure, the state would be declared a disaster area. This is done to enable federal, state and local coordination of emergency programs, Ramshaw said.

It is possible that some other areas, particularly the Big Wood valley in Blaine County, may also qualify for federal aid.

The county commissioners filed their first request on July 20. The federal OEP held up action while Willman checked the reported damages.

Local officials had estimated damages in Butte County at \$511,067, which did not include costs of reclaiming land destroyed by flood waters, nor damage to Highway 93A.

Willman estimated damages in Butte County at \$670,000, and in Custer County at \$390,000.

Willman's preliminary report estimated damages to private land in Butte County at \$446,000, and to public facilities at \$224,000. The tabulated breakdown:

BREAKDOWN OF ESTIMATED DAMAGES

	Butte	Custer
Crop and Land	\$243,000	\$ 50,000
Weed Control	100,000	50,000
Roads and Bridges	100,000	25,000
Union Pacific Railroad	3,000	
Utilities, Water and Sewer	2,000	3,500
Protective Expenditures	45,000	16,000
Local damages	6,000	6,000
River Channel	100,000	100,000
Irrigation District	71,000	139,500



June 20, 1974 Single Copy 15c

to determine versial horses

ed by Max S. Abourek and de. The notice Brand Inspected the joint au of Land orest Service o the Howe January and so far as it ship of such claims them affidavits at the informa- e State Brand is deputies. hat any per- ledge of or ence relating of the horses- ent the evi- tion and may in writing or the con- De- ish- give- ence

ll as travel- involved in the flection of the and Rescue been mainly out a 30-mile ne and Power s have been wider area of stretches for rections. and Rocky of Pocatello. from the rest d in a DECS- al training ay, June 10, and the rest of Crystal Ice Page 3

are required to submit to the Brand Inspector's Office a "verified, concise statement of the evidence intended to be produced together with copies of any documents intended to be produced at least three days before the date of said hearing." No written or oral appearances, or parties will be heard or accepted at said hearing unless the State Brand Inspector is given notice of the same at some time before commencement of the hearing, according to the Continued on Page 3

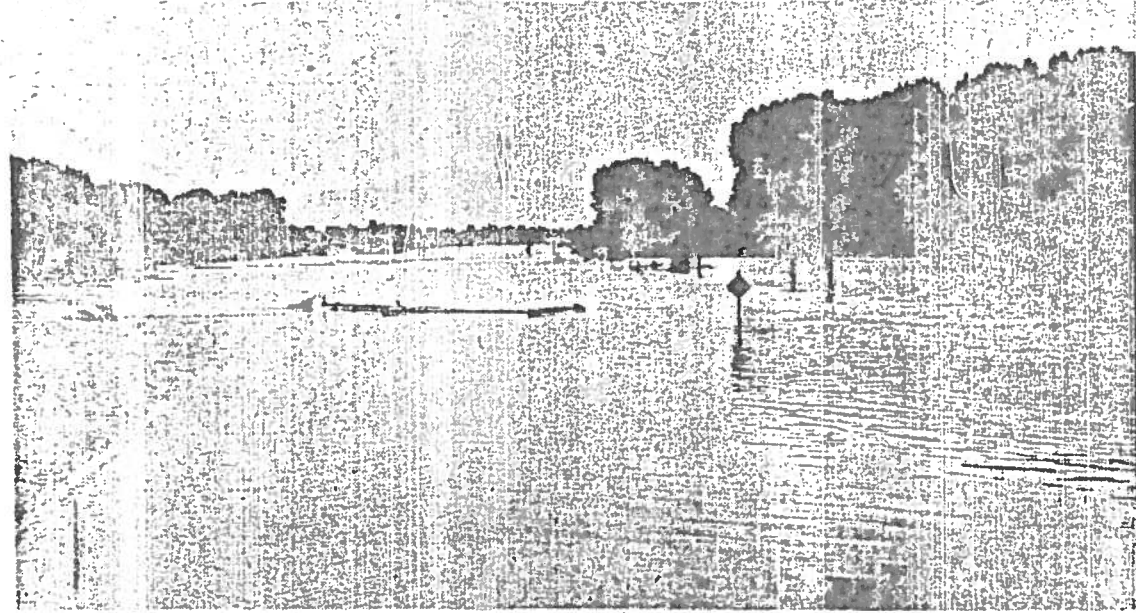
Big Lost River waters recede

Following the flooding which peaked early last week in the Big Lost River Valley, the heaviest runoff appeared to be over by Saturday of last week. Traffic on US 93A south of Leslie was restored before Saturday as crews worked to build up river channel rip-rapping where the flood waters had broken through. Repairs were made to county roads and river banks in several areas to repair damage and forestall further flooding. The river dropped rapidly at Mackay over the weekend and began to return to its banks in the Arco area over the weekend. Some low-lying river front land is still under water and high sub water has appeared in many fields and pastures throughout the valley, with quite a number of basements flooded in areas

with a high sub. Hot weather which has gripped the area since June 10 was responsible for a rapid snowmelt in the mountains where snow pack was well above average this year, and the heavy run-off sent creeks and rivers in the watershed out of their banks. It appears that the heavy run-off has depleted the snow pack to the point where streams should be able to handle the water through the rest of the season. Mackay Reservoir was filled to capacity and water was running over the spillway last week. It is expected that water in storage and streamflow will be adequate for the season's irrigation needs. Ranges in the area are extremely dry, with no measurable precipitation received for several weeks.

An additional holiday will also National Laboratories.

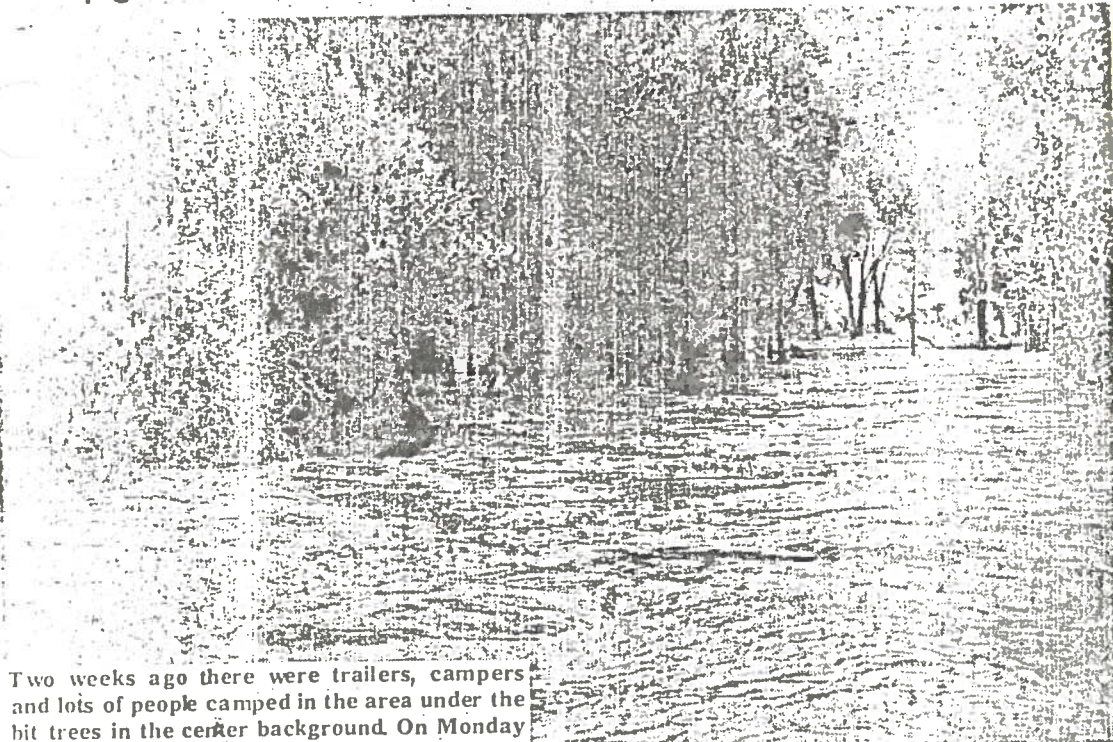
93A closed by rampaging Big Lost



This is the scene that greeted travelers on Highway 93A south of Leslie as the Big Lost River went over its banks Sunday afternoon. Unseasonably hot weather of the past week has triggered a rapid snowmelt in the mountains and the heavy snowpack of the past winter is providing more water than the channel can handle, flooding a large area of the low-lying

area south and east of Leslie. High water coursing down the river has also inundated low areas in the Arco area. The Mackay Reservoir is full and water is coming over the spillway. The road was still closed Wednesday night and traffic is being detoured around the gravel roads east of the highway. Continued on Page 6

Campground?



Two weeks ago there were trailers, campers and lots of people camped in the area under the big trees in the center background. On Monday several feet of water covered the spot as the Big Lost River went on its rampage.

No fish salvage



South of Moore the river was running bankfull in the area where local sportsmen have worked to rescue trout as irrigation drawdown dried the river the past two years.

The weather

Unseasonably hot weather which edged up to a high of 89 degrees on Wednesday, June 12, continued to grip the area this week. Temperatures above 90 degrees were recorded on 10 days of the past seven, with a high of 95 at the Arco Airport Weather Station on Sunday, tapering down to a high of 89 on Wednesday. Low Temperatures for the week ranged from a low of 47 last Thursday to a high of 51 on Friday, with 50s recorded as low on the remaining days of the week.

The unseasonably hot weather without any precipitation has brought about the paradox of extremely dry range conditions, at the same time the area's streams are running out of their banks, as the heavy snowmelt in the mountains sends torrents of water into the valley.

The day-by-day summary for the past week shows:

	Hi	Lo
June 13	92	47
June 14	92	56
June 15	95	52
June 16	94	53
June 17	93	52
June 18	92	52
June 19	89	51



Complete Machine
Lathe, tool & die work

BUTTE CITY MACHINE

Butte City — CLIFF ROAD
4 mi. east

Benny's
Barber Shop
Open 8 to 6

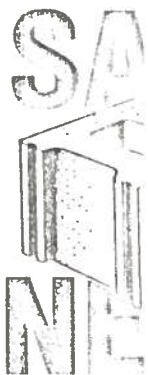
Price — \$2.00 and \$2.25

Closed Mondays

THANK YOU

TO THE CITIZENS OF BUTTE COUNTY:

The members of the Arco Veterans of Foreign Wars Post and its Ladies Auxiliary wish to take this means to convey to each and everyone in Butte County their thanks and appreciation for



BUILD WITH ARCO

You help solve the problem when you build with Block. With high qualities our products monthly heating

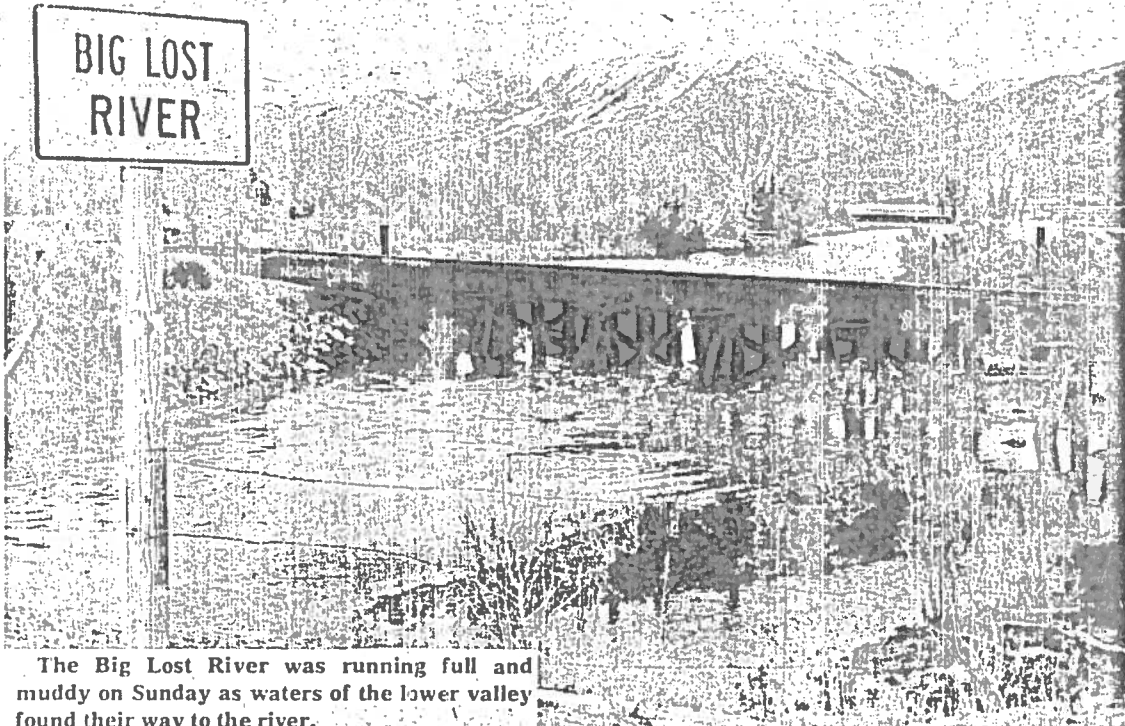
Water, Water everywhere . . .

Warm weather of the past weekend brought a rapid snow-melt at lower elevations, sending a great volume of water down each creek, dry draw and broad valley in the area. Roads were flooded and washed out, basements were filled, corrals, feedlots and farmyards were turned into lakes as the water found its way to lower ground.

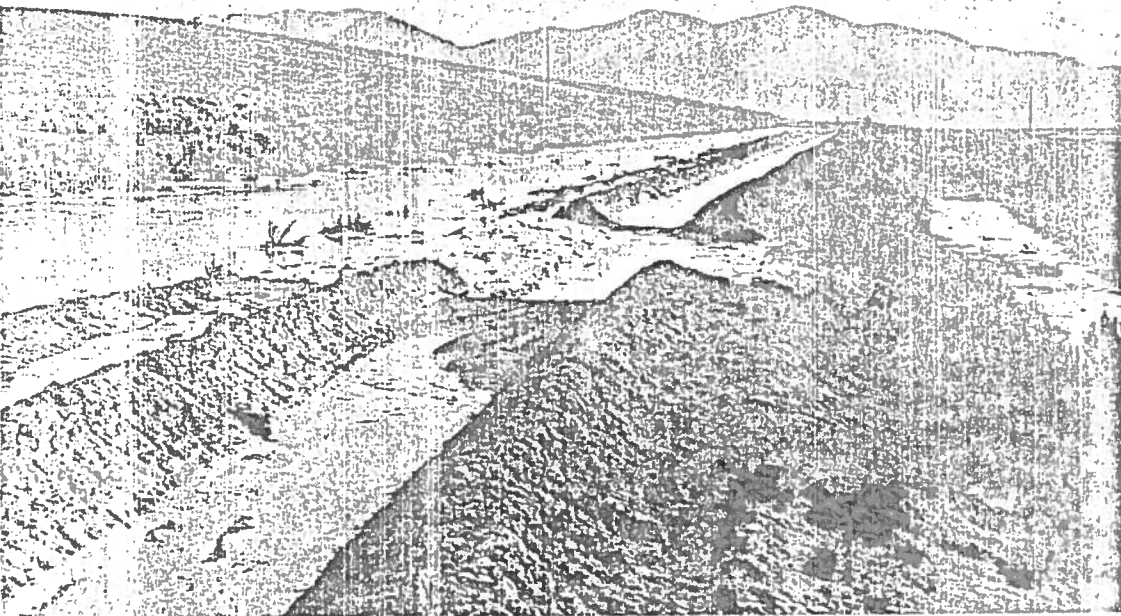
County highway crews were busy trying to stay ahead of the destruction of roads and

repair damage to keep roads open. State highway crews were busy posting signs and repairing shoulders in several areas, and crews of the railroad had their hands full repairing damage to the tracks. Cooler weather Tuesday and Wednesday brought at least a temporary halt to the flooding, which has probably passed its peak as lower snow is mostly gone and the cool weather has allowed the streams to take care of the excess water from most drainages.

Too thick to drink . . .
too thin to plow



The Big Lost River was running full and muddy on Sunday as waters of the lower valley found their way to the river.



The old UC Canal on the west side of the Lost River Valley carried a full load for several days last weekend, flooding over and inundating a large area of lower ground surrounding the Juel

Aikele place. An access road across the canal was breached Sunday evening to allow more of the water to drain to the area to the west of the Aikele farm.



LOST RIVER

Josephine Toman

Relief Society holds dinner

A wonderful dinner program last Friday sponsored by Relief presidency of Lost River was well attended. Ed had a small world for piece and wall decorations flags from Italy, Mexico and Argentina and other features and in those countries. Agn was narrator for the occ

Mr. and Mrs. Frank waite of Willard, Utah, of Arco, were overnig Monday night in the J.C. home. They visited at Sedgwick, Marvin Ste Harold Andersen home and were dinner gues and Mrs. Eldred Brait their home in Moore t ing.

Atha Aikele visited last week with her Thomas.

Tracy Reynolds i home from Salt Lake Provo where he has weekend with his son, Salt Lake City and Noe along with their familie Mr. and Mrs. Rodney

Baptist Community Church to hold youth gathering

An expanded youth will get underway thi evening at the Baptist C ty Church. The activ begin at 6:30 p.m. with potluck supper, to be fo volleyball and other f experiences. The "g will conclude with a c of continuing ministrie vities and a devotional youth. All Junior High or High youth, not with other churches, to attend.

BOR funds pro \$9 million in

The Land and Water tion Fund Program, in of progress, has distri \$9 million in Idaho fe tion and development and recreation facilitie is administered throug eau of Outdoor Recre the Idaho Park and F Department responsi tribution of monies, counties, state agen other public bodies in outdoor recreation an lifying agencies receiv a 50-50 matching basis project sponsor is resp operation and matint the completed facilit than 200 projects throu state have utilized the to acquire and develop lasting benefit and enj the citizens.

Applications for fun encouraged. Interested ties and agencies sho the Idaho Parks and F Department.

VISITORS HERE FROM REXBURG

Evelyn Tibbitts was day from Rexburg, ac friend Terry Davi at the home of a Grant Waddoupa, panied by Mr. and dous and daugh

March 21, 1974

was down Monday morning along the old foot highway east of Arco, where considerable damage was done Sunday as floods came down though the Arco Pass area over-

ran the road and flooded fields and farms. By mid-afternoon Monday water was up again but did not reach Sunday's level.

roadmen are shown as they sand-filled the railroad right-of-way east of town Monday. Water spilling out of Arco Pass and across the highway washed the roadbed in

several places, leaving rails well off the ground with ties suspended from the rails. A work train was busy Tuesday replacing ballast and building up the roadbed into town.

in the lower valley Monday, water had receded enough to let cars through, but farm yards were still flooded and muddy. High water again in the after-

stock to higher ground. Tractors and scrapers were busy clearing mud from driveways and yards by mid-week.

Monday evening this is the way one of the county roads southeast of Arco appeared as the volume of water came down across the flats from the day's snow-melt.

LOST RIVER COMMUNITY CHURCH

Howe, Idaho
Ed Bonne — Pastor

March 24, 1974
Sunday School, 10 a.m.
Morning Worship, 11 a.m.
Following the Morning Worship hour there will be a ground-breaking ceremony for our new building.
Bible Studies will resume this week.
Bible memorization continues. Some have nearly finished the course.
Crusaders will meet Monday at 7 p.m.

THE BAPTIST COMMUNITY CHURCH
The Rev. Eugene H. Duncan
Sunday— 9:30 a.m., Church School.
11 a.m., Worship Service.
Tuesday— 7 p.m., Bible Study & Prayer Fellowship
8 p.m., Sanctuary Choir rehearsal
Thursday— 7:30 p.m., Youth meeting.
4th Thursday— 8 p.m., American Baptist Women meeting

CHURCH OF CHRIST
314 Delores Avenue
Call 554-4262 or 527-3018 (off.)
Home phone 527-3142
Sunday: Bible Class, 10:00 a.m.
Worship, 11 a.m.
Afternoon Bible Class, 3:30 p.m.
Wednesday: Bible Class, 7:30 p.m.

JEHOVAH'S WITNESSES
Kingdom Hall, Moore
Sunday: Public Meeting 10 a.m.
Watchtower Study 11 a.m.
Tuesday: Congregation Book Study, 7:30 p.m., Beulah Nordin residence, Mackay.
Thursday: Theocratic Ministry School, 7:00 p.m.
Service Meeting 8:00 p.m.

ARCO ASSEMBLY OF GOD
"Church on the Hill"
Jim Kay, Pastor
Sunday School, 9:45 a.m.
Morning Worship, 11:00 a.m.
Evening Evangelistic, 7:00 p.m.
Wednesday: Bible Study and Prayer, 7:00 p.m.

Potato growers to meet Friday

Potato Growers of Idaho, Inc. have set a grower meeting for all potato growers Friday, March 22 at 1:30 p.m. at the Westbank Motel in Idaho Falls.
Pre-season marketing contracts have been settled with three major processors in Idaho. Those settled are Carnation Foods, Nampa; Ore-Ida Foods, Ontario and Burley; Idaho Frozen Foods, Twin Falls.
The contracts were settled at a base price of \$4.00 per cwt. for all potatoes grading U.S. #2 processing grade and better, 1 1/2" minimum.
Incentive clauses in the contracts are geared to pay additional bonus for quality and size.
The meeting will be a general discussion meeting to review details of contracts settled. The current status of our bargaining progress with all other processors not settled, to review the fresh market picture, open stock potato sales, stocks of old crop potatoes, seed availability, planting intentions, competitive crops and fertilizer supplies.
Non-members of the PGI are particularly invited to attend and urged to participate in the proceedings of the meeting.